



# CHAMPLAIN HUDSON POWER EXPRESS

## PROJECT UPDATE FOR:



OCTOBER 14, 2020

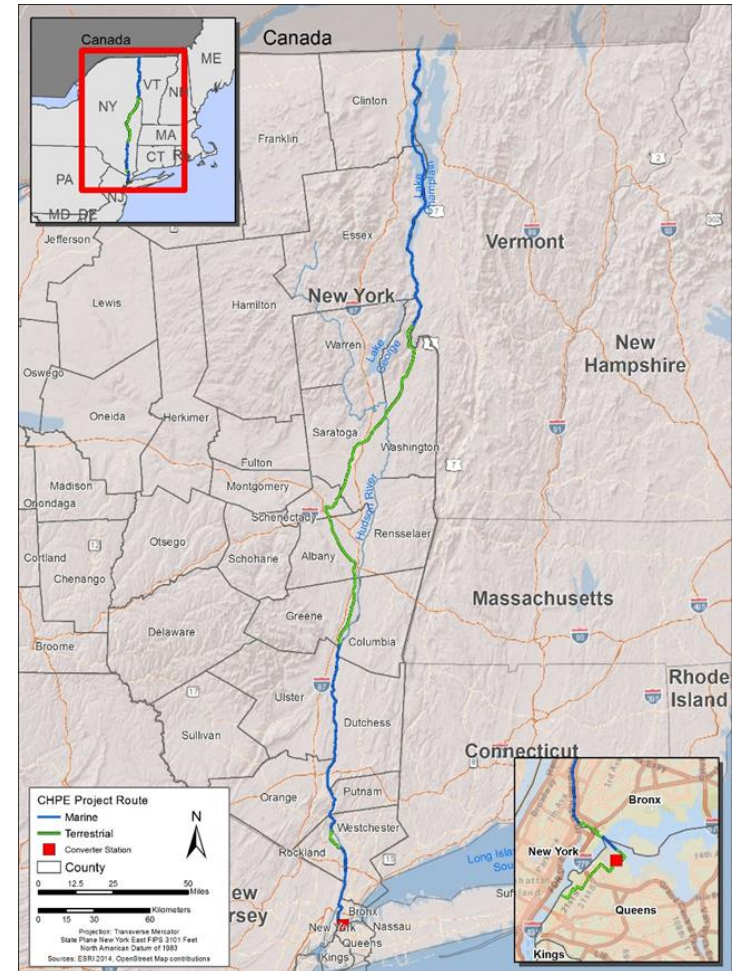


**Transmission**  
Developers Inc.

A **Blackstone** Portfolio Company

# Champlain Hudson Power Express (“CHPE”) Project Overview

- **1,000 MW buried HVDC transmission line that will transport a minimum of 8.3 TWh of renewable energy directly into NYC**
  - The largest single renewable energy opportunity for New York State, construction ready to help meet New York’s immediate clean energy needs
  - Energy sourced from existing Canadian hydro; no new dam construction required
- **Fully buried to minimize community / environmental impact while maximizing natural disaster resiliency**
  - 335-mile route from Canadian border to NYC (~60% buried in waterways / ~40% buried along existing rights-of-way)
  - Estimated to decrease carbon emissions by 3.4 million metric tons per year
  - Hardened infrastructure will make New York’s aging energy grid safer, more secure, and more reliable
- **Fully permitted and supported**
  - Widespread support in New York
  - All major permits received
  - Project would create thousands of union jobs and significant new revenue for NY Towns, Villages, Counties, and School Districts, without any additional demand for municipal services



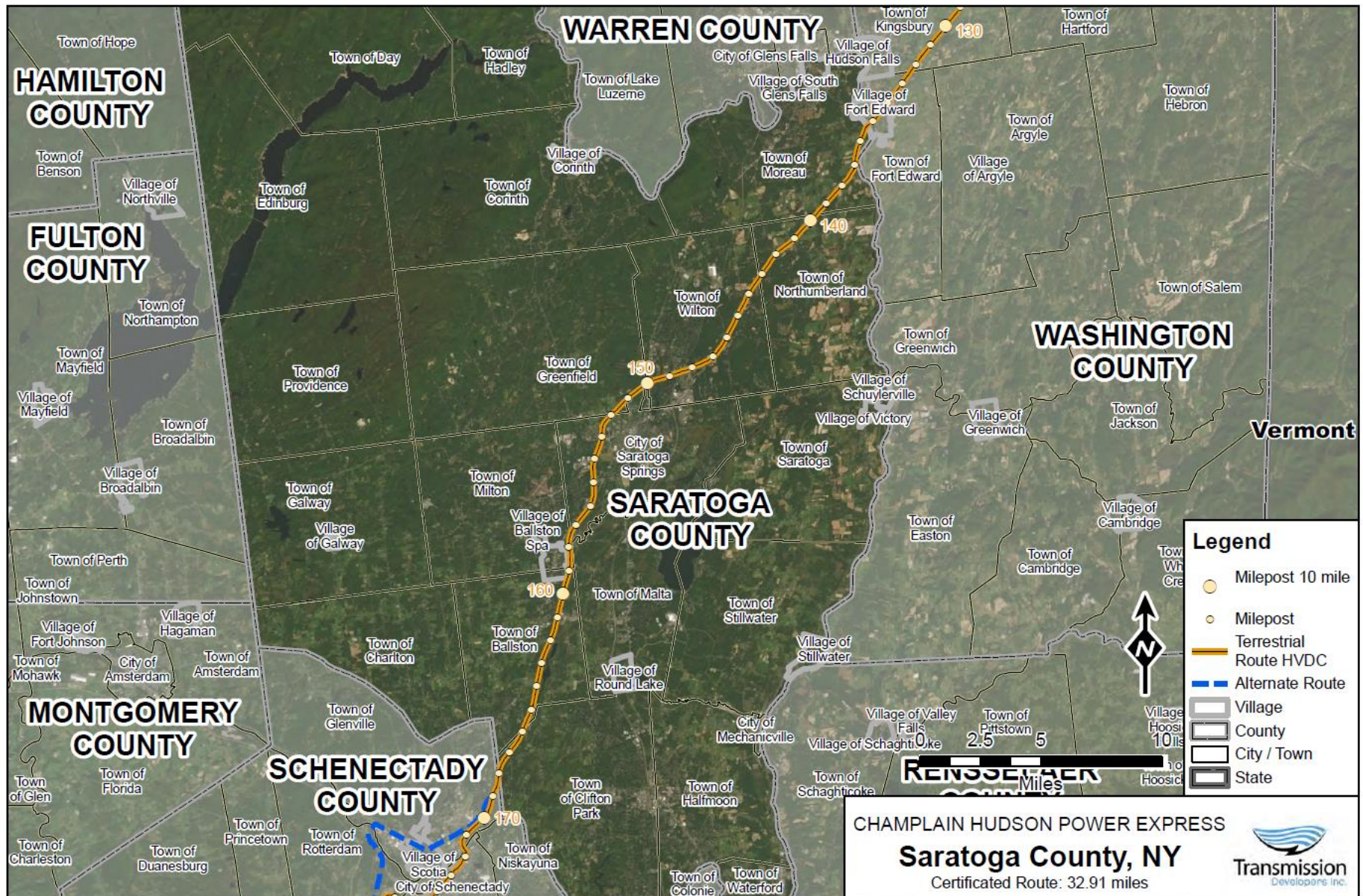
*Transmission Developers, Inc. (“TDI”) is supported by world class suppliers, engineers, and energy infrastructure builders, and backed by Blackstone, one of the world’s leading alternative asset managers..*

# Key Components of CHPE within Saratoga County

Item	Details
Route in Saratoga County	Approximately 33 miles; primarily within Canadian Pacific Railway's right-of-way
Construction Timeline	2021-2025; exact construction season(s) within Saratoga County TBD
Estimated Cost in Saratoga County	The construction cost of CHPE within Saratoga County is expected to be approximately \$235 million
Annual Electricity Delivery	8.3 TWh at 1,000 MW
Taxes / PILOT	TDI will be required to pay taxes annually during project operations to Municipalities, Counties, and School Districts; PILOT agreements are being pursued
Operating Life	Minimum of 40 years
Technology	High Voltage Direct Current (HVDC), Voltage Source Converter technology
Permitting	Fully permitted within the U.S. by State and Federal Authorities
Supply	Renewable energy from Quebec



# Overview of Route through Saratoga County



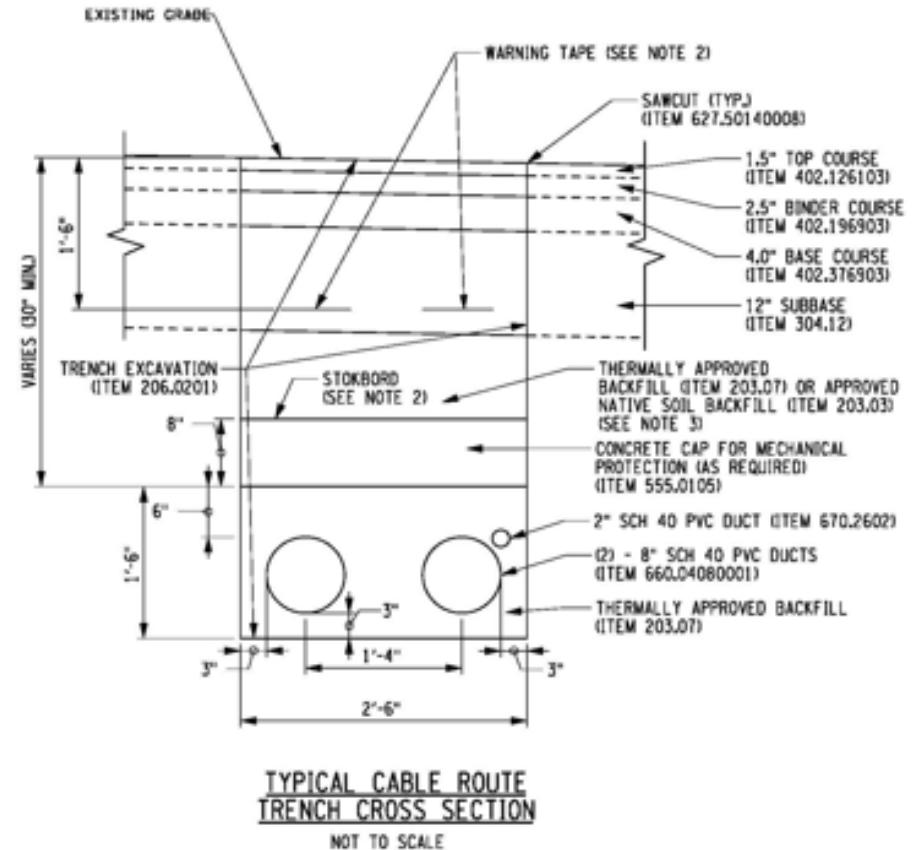
# Overview of Technology and Installation

## HVDC Transmission Cables

- Proven technology that has been utilized around the world for decades
- Two, 5" diameter cables are buried / submerged along the entire route
- Cables are solid state with a copper core and do not contain liquids

## Overview of Installation

- Cables are buried approximately five feet under the ground within conduits
- Protections installed over cables to prevent damage and inadvertent intrusion by others
- Installation closely coordinated with municipality, NYSDOT, and the Railroads
- Impacts related to installation deemed minimal by State and Federal Agencies



# Support from Saratoga County Host Communities

## **Resolutions in Support Passed**

- Town of Moreau
- Town of Northumberland
- Town of Wilton
- Town of Ballston
- Town of Clifton Park
- Town of Greenfield



## **Resolution of Support Pending**

- Town of Milton – October

## **Meetings Pending to Discuss Resolutions of Support (Postponed by COVID)**

- City of Saratoga Springs





Rick Chase  
Transmission Developers, Inc.  
600 Broadway  
Albany, NY 12207  
[www.chpexpress.com](http://www.chpexpress.com)  
(518) 461-6836